



Palisade Fencing

CATALOG

2020/01



Tel: 0086 311 88833097
Mob: 0086 180 3291 2353



WhatsApp: 0086 180 3291 2353
Skype: 0086 180 3291 2353



www.linkland.com
Veronica@linklandfence.com



Palisade Fencing

Palisade fencing is a high security fencing prevailing in Europe, Australia and South Africa markets.

It is designed to be strong, durable and provide excellent protection against climbing and cutting through.

Its imposing appearance, minimal foot holes and robust vertical steel pales ensure its excellent protection against unauthorized access, vandalism and attack.

Besides, it is also a good alternative to high walls.

Typically, it is widely used to address a wide range of perimeter security needs from general purpose to high security purpose and is widely used in various residential, commercial and industrial applications, including but not limited to, highways, airports, docks, schools, sports grounds, leisure facilities, etc.

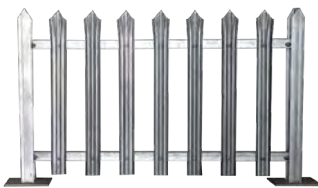


Category

Fence panel

The chain link fence fabric may be attached to the fence frame and fixed with tension bars or tie wires.

⊕ Galvanized



⊕ Powder coating



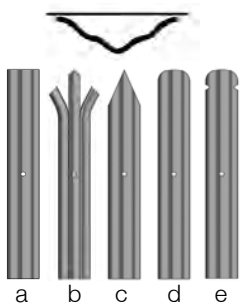
Pales

Our palisade fencing can be divided into three types by pale profile, namely, D-section pales, W-section pales and angle steel pales as listed below.

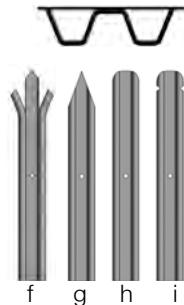
⊕ D-section pales

⊕ W-section pales

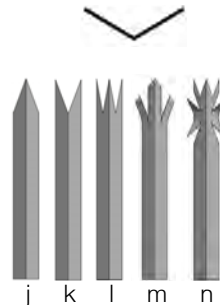
⊕ Angle steel pales



- a. square top;
- b. triple pointed top;
- c. single pointed top;
- d. round top;
- e. round & notch top

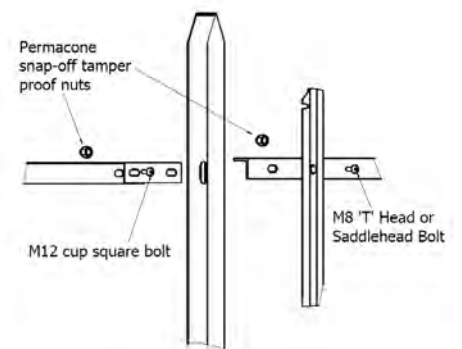


- f. triple pointed top;
- g. single pointed top;
- h. round top;
- i. round & notch top

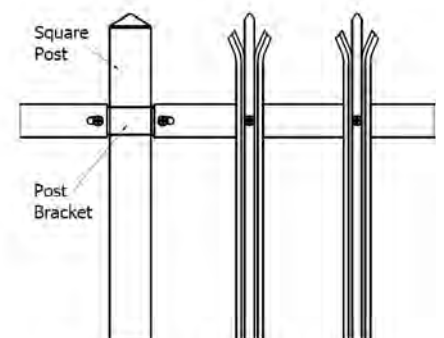


- j. single pointed top;
- k. double pointed top;
- l. triple pointed top;
- m. triple pointed & splayed top;
- n. triple pointed & spikes top

Connection



I POST CONNECTION



SQUARE POST CONNECTION

A Height: 1800 mm, 2100 mm, 2400 mm, 3000 mm

B Width: 2750 mm

C Pale Type: W-profile, D-profile and angle steel

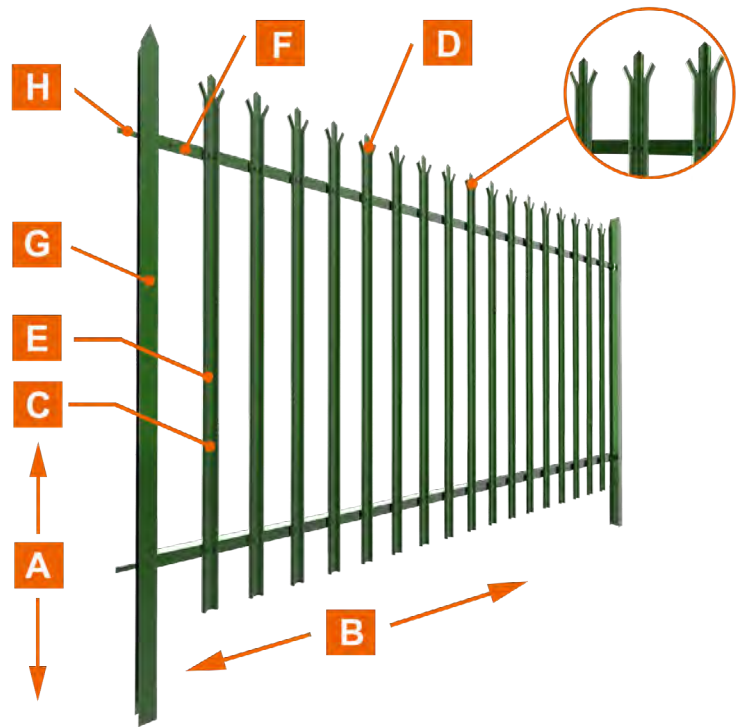
D Pale Top: square top, triple pointed top, single pointed top, round top, round & notch top, etc.

E Pale Thickness:
1.5 mm, 2.0 mm, 2.5 mm, 3.0 mm, 3.5 mm

F Horizontal Rail:
angle steel (40 mm × 40 mm × 4 mm,
50 mm × 50 mm × 5 mm,
50 mm × 50 mm × 6 mm)

G Post:
square post (60 mm × 60 mm, 80 mm × 80 mm,
100 × 100 mm);
I post (100 × 55 mm)

H Connection: fish plate (40 mm × 8 mm × 150 mm)



- > All panel pales are provided in 17 pieces;
- > M8 × 30, M12 × 30 anti-vandal steel or stainless steel bolts are provided;
- > All colors are available in Ral;
- > Other materials and specifications are available upon request.

⊕ Specification of W-Section Type

Panel Size		W-Section Pale: 70 mm		Horizontal Rail		Post
Height	Width	Pale thickness	Qty: Pale	Angle Steel	Square Post	I Post
1.8 m	2.75 m	2/2.5/3 mm	17 pcs	40 × 40 × 4 mm, 50 × 50 × 6 mm	60 × 60 mm, 80 × 80 mm, 100 × 100 mm	100 × 55 mm
2.1 m	2.75 m	2/2.5/3 mm	17 pcs			
2.4 m	2.75 m	2/2.5/3 mm	17 pcs			
3.0 m	2.75 m	2/2.5/3/3.5 mm	17 pcs			

⊕ W-section Pale: 62 mm

1.8 m	2.75 m	2/2.5/3 mm	17 pcs	40 × 40 × 4 mm, 50 × 50 × 6 mm	60 × 60 mm, 80 × 80 mm, 100 × 100 mm	100 × 55 mm
2.1 m	2.75 m	2/2.5/3 mm	17 pcs			
2.4 m	2.75 m	2/2.5/3 mm	17 pcs			
3.0 m	2.75 m	2/2.5/3/3.5 mm	17 pcs			

⊕ Specification of D-Section Type

Panel Size		W-Section Pale: 70 mm		Horizontal Rail		Post
Height	Width	Pale thickness	Qty: Pale	Angle Steel	Square Post	I Post
1.8 m	2.75 m	1.5/2/2.5/3 mm	17 pcs	40 × 40 × 4 mm, 50 × 50 × 5 mm	60 × 60 mm, 80 × 80 mm, 100 × 100 mm	100 × 55 mm
2.1 m	2.75 m	1.5/2/2.5/3 mm	17 pcs			
2.4 m	2.75 m	1.5/2/2.5/3 mm	17 pcs			
3.0 m	2.75 m	1.5/2/2.5/3 mm	17 pcs			



Production Flow Chart

- + Step 1**
.....
Raw materials (galvanized steel coil)
- + Step 2**
.....
Pale profile forming
- + Step 3**
.....
Pale cutting
- + Step 4**
.....
Pale head forming
- + Step 5**
.....
Pale punching
- + Step 6**
.....
Finished pale



Step 1



Step 2



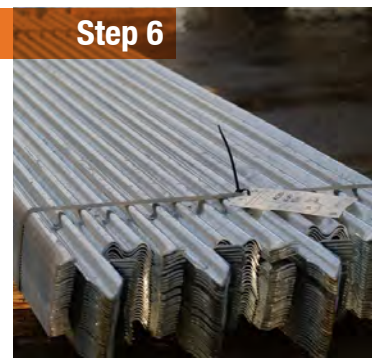
Step 3



Step 4



Step 5



Step 6

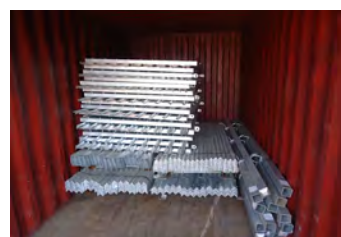
Package & Delivery



FENCE PALE PACKAGE



HORIZONTAL RAIL PACKAGE



FENCE DELIVERY



Features & Application

Features

⊕ Excellent resistance to deformation

High tensile fixings and support base offer maximum resistance to deformation.

⊕ Match up with most surroundings

A wide range of designs and colors are available to perfectly match up with most surroundings.

⊕ Corrosion & rust resistance

Excellent corrosion & rust resistance and weather resistance performance.

⊕ Fast & easy installation

Fast and easy installation and less maintenance.

⊕ Against unauthorized access, vandalism and attack

Providing a higher level of security and excellent protection against unauthorized access, vandalism and attack.

Application

Palisade fencing is designed to provide a high level of security for a wide range of outdoor applications and is widely used in schools, commercial buildings, parks, churches, stadiums, railways, yards, companies, etc.



COMMUNITIES



PARKS



PARKING LOTS



GARDENS



RAILWAYS



HIGHWAYS



LINKLAND™

ANPING LINKLAND

WIRE MESH PRODUCT CO., LTD



Weimin East Street, No. 69-70
The Filter Industrial Park of Anping
County, HEBEI, CHINA. 053600



Tel: 0086 311 88833097
Mob: 0086 180 3291 2353



WhatsApp: 0086 180 3291 2353
Skype: 0086 180 3291 2353



www.linklanden.com
Veronica@linklandfence.com

