

ANPING LINKLAND
WIRE MESH PRODUCT CO., LTD



358 High Security Fence

CATALOG

2020/01



Tel: 0086 311 88833097
Mob: 0086 180 3291 2353



WhatsApp: 0086 180 3291 2353
Skype: 0086 180 3291 2353

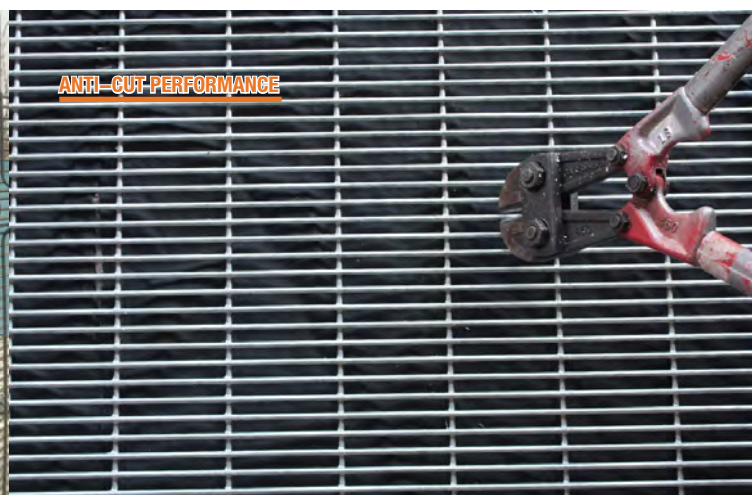


www.linkland.com
Veronica@linklandfence.com



358 High Security Fence

358 high security fence, also known as anti-climb fence, is a kind of superior high tensile and high security welded wire mesh fence. The fence name 358 comes from its panel with a mesh opening of 3" × 0.5" and a wire diameter of 8-gauge (approximate to 76.2 mm × 12.7 mm × 4 mm). It is designed to be a robust, anti-climb and anti-cut barrier to provide high security protection. The mesh opening is so small, you can even put your finger on it, which makes it almost impossible to be climbed and cut. Meanwhile, the 8-gauge wire is strong enough to form a rigid structure, which makes it extremely perfect to secure your property and realize effective access control. It is hugely flexible for a wide range of high security locations, including but not limited to, schools, industrial and commercial sites, police stations, prisons, government agencies, airports, railways and seaports, etc.





Category

Panel Surface

According to the shape of panel surface, our 358 high security fences can be divided into two types as shown below.

⊕ 2D 358 high security fence



⊕ 3D 358 high security fence



Surface Treatment

According to the surface treatment, our 358 high security fence can be divided into two types as shown below.

⊕ Galvanized

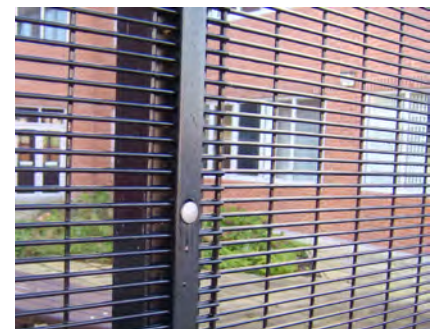


⊕ Powder coating



Mesh Opening Direction

According to the mesh opening direction, our high security fence can be divided into two types as shown below.



HORIZONTAL MESH OPENING



VERTICAL MESH OPENING

Specification

A Height: 1200–2500 mm

B Width: 2000–3100 mm

C Wire Diameter: 3.2 mm (10 gauge), 4.0 mm (8 gauge)

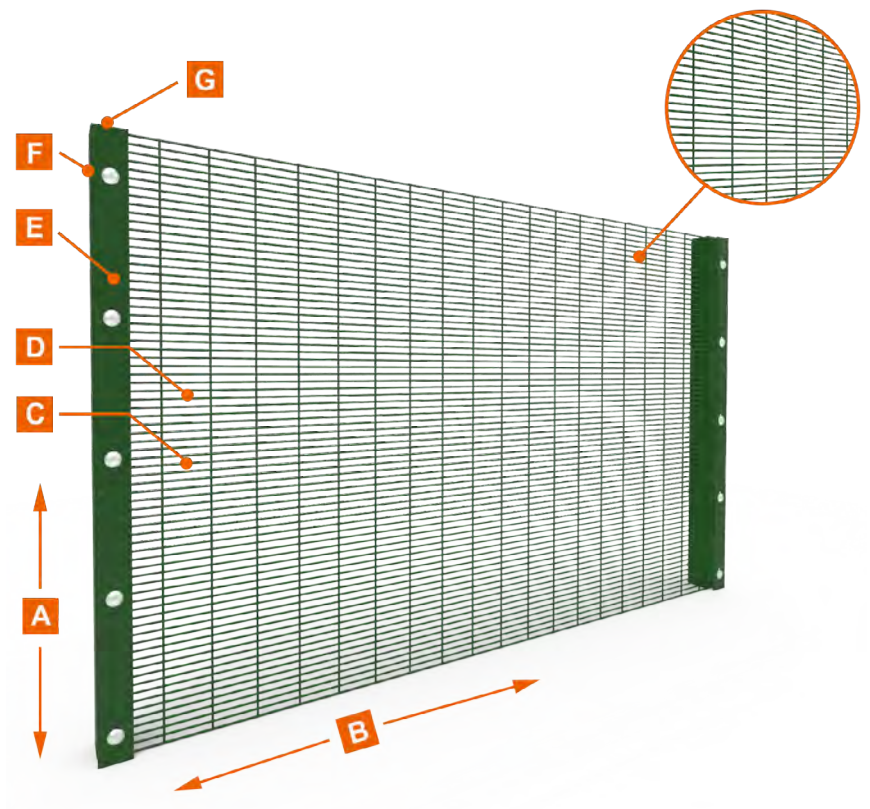
D Mesh Opening: 12.7 × 76.2 mm (0.5" × 3")

E Clamp: metal clamp/tension bar covered

F Post:

square post (60 × 60 × 2.0/2.5/3.0 mm,
80 × 80 × 2.0/2.5/3.0 mm);
rectangular post (40 × 60 × 2.0/2.5/3.0 mm,
40 × 80 × 2.0/2.5/3.0 mm, 60 × 80 × 2.0/2.5/3.0
mm, 80 × 100 × 2.0/2.5/3.0 mm)

G Post Cap: metal cap / anti-UV plastic cap



- > 3510 high security fence is also available. 3510 high security fence has the same mesh opening as the 358 high security fence, the only difference is the wire diameter is 10-gauge instead of 8-gauge.
- > All colors are available in Ral;
- > Other materials and specifications are available upon request.



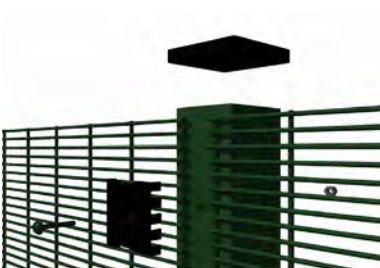
Components & Accessories

The main components and connection methods of our 358 high security fence are as shown below.

⊕ Clamp bar connection

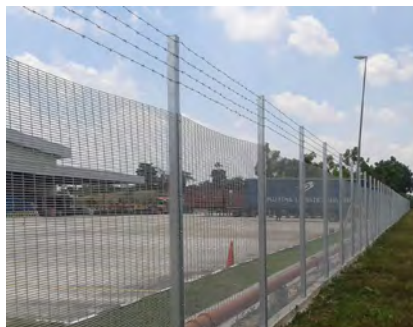


⊕ Spider clip connection



Optional Accessories

Barbed Wires & Razor Wires



BARBED WIRES



RAZOR WIRES

Wall Spikes & Warning Signs



WALL SPIKES



WARNING SIGNS



Production Flow Chart

- + Step 1**

.....

Raw materials (galvanized steel wires)
- + Step 2**

.....

Steel wire straightening and cutting
- + Step 3**

.....

Wire mesh welding
- + Step 4**

.....

Wire mesh bending
- + Step 5**

.....

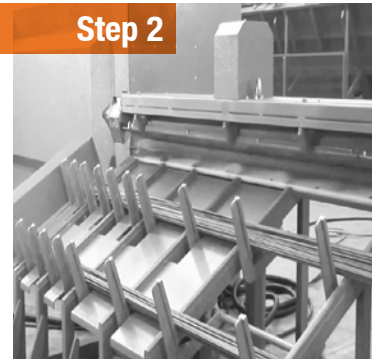
Fence panel powder coating
- + Step 6**

.....

Finished 358 high security fence panels



Step 1



Step 2



Step 3



Step 4



Step 5



Step 6

Package & Delivery



PANEL PACKAGE



POST PACKAGE



FENCE DELIVERY



Features & Application

Features

⊕ Anti-climb

Small mesh opening offers no footholds for climbing.

⊕ Excellent surface treatment

Galvanized and powder coating treatments offers excellent rust, corrosion and weather resistance performances.

⊕ Robust structure

Panel wires are firmly welded at every intersection and provide a solid and robust structure.

⊕ High security

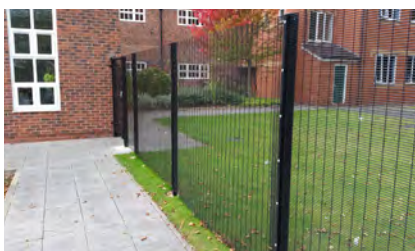
It can be cooperated with barbed wires and razor wires to offer higher security.

⊕ Anti-cut

Solid welding joints, small mesh opening, together with thick wire diameter make the mesh is hard to be cut by hand or powered tools.

Application

Our 358 high security fence is hugely flexible for a wide range of high security locations, including but not limited to, schools, industrial and commercial sites, police stations, prisons, government agencies, airports, railways and seaports, etc.



COMMUNITIES



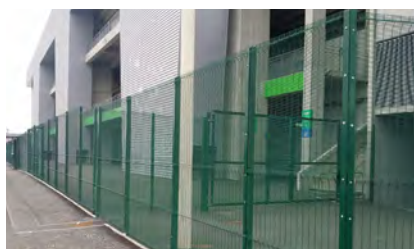
FACTORIES



ALONG ROADSIDE



CONSTRUCTION SITES



GOVERNMENT AGENCIES



SCHOOLS



LINKLAND™

ANPING LINKLAND

WIRE MESH PRODUCT CO., LTD



Weimin East Street, No. 69-70
The Filter Industrial Park of Anping
County, HEBEI, CHINA. 053600



Tel: 0086 311 88833097
Mob: 0086 180 3291 2353



WhatsApp: 0086 180 3291 2353
Skype: 0086 180 3291 2353



www.linklanden.com
Veronica@linklandfence.com

